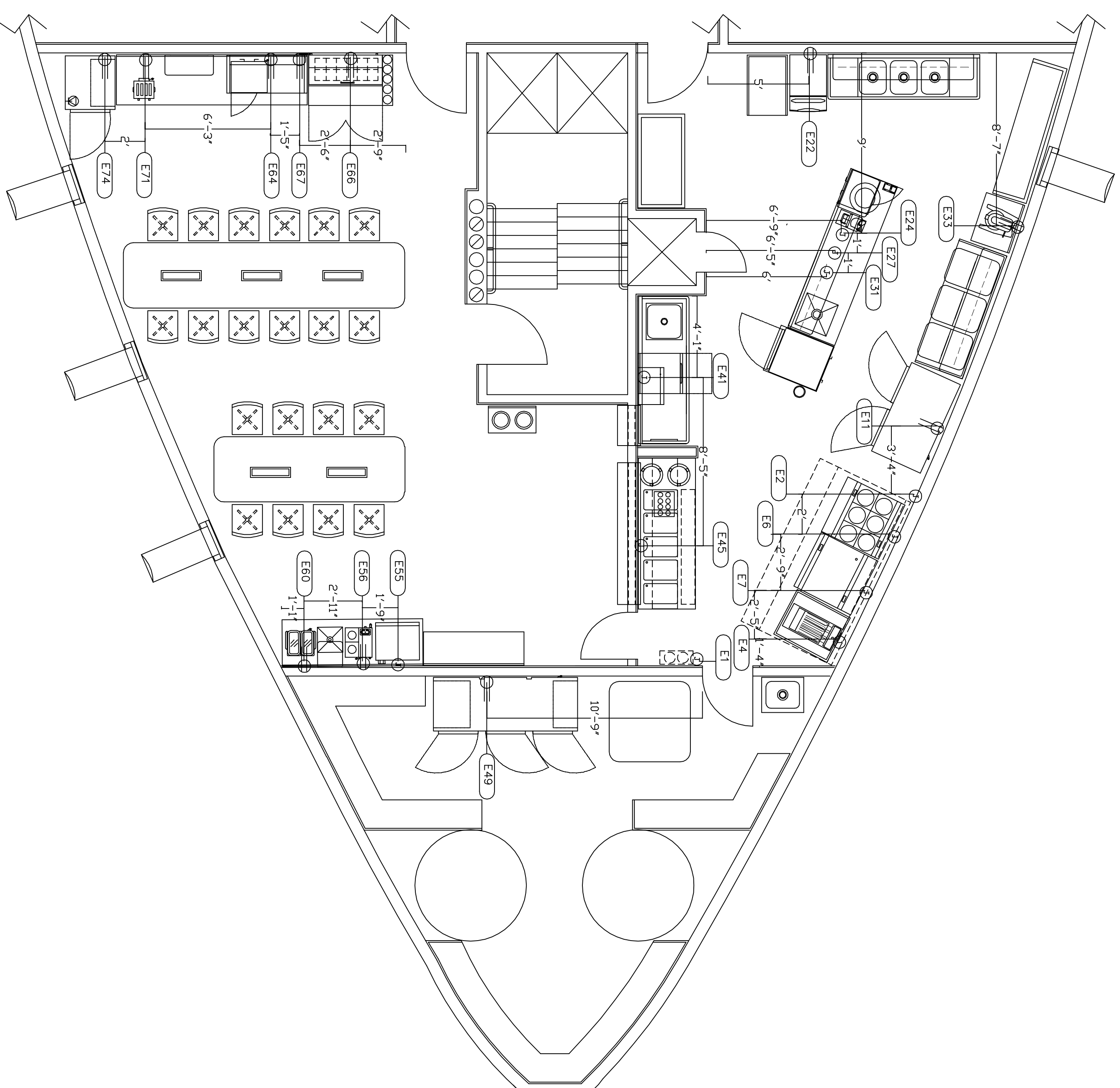
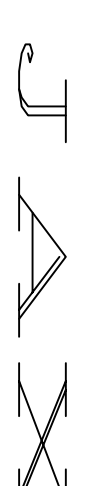


## ELECTRICAL CONNECTION SCHEDULE

E1	120-V 1 PH SERVICE, 10 AMPS. ELECTRICAL CONNECTION AT 76" AFF FOR SERVICE AT ITEM 1, FIRE SUPPRESSION SYSTEM
E2	VERIFY VOLTAGE, PHASE, AMP LOAD. FOR EXHAUST SYSTEM INTERCONNECT FROM CONTROL PANEL ON HOOD TO FAN(S) VERIFY LOCATION OF CONTROL PANEL
E4	440-V 3 PH SERVICE, 15.7 AMPS, 12 KW. ELECTRICAL CONNECTION AT 16" AFF FOR SERVICE AT ITEM 4, FRYER
E6	440-V 3 PH SERVICE, 30.0 AMPS, 21.6 KW. ELECTRICAL CONNECTION AT 16" AFF FOR SERVICE AT ITEM 6, RANGE W/CONVECTION OVEN
E7	440-V 3 PH SERVICE, 30.0 AMPS, 21.6 KW. ELECTRICAL CONNECTION AT 16" AFF FOR SERVICE AT ITEM 7, GRIDDLE RANGE
E11	120-V 1 PH SERVICE, 11.4 AMPS. ELECTRICAL OUTLET AT 78" AFF FOR SERVICE AT ITEM 11, REACH-IN REFRIGERATOR/FREEZER
E22	120-V 1 PH SERVICE, 9.8 AMPS, 1/3HP. ELECTRICAL OUTLET AT 16" AFF FOR SERVICE AT ITEM 22, ICE MACHINE
E24	120-V 1 PH SERVICE, 15 AMPS, 1200W ELECTRICAL CONNECTION AT 16" AFF FOR SERVICE AT ITEM 24, MICROWAVE OVEN RUN TO D/O MOUNTED ON ITEM 27
E27	120-V 1 PH SERVICE, 15 AMPS. ELECTRICAL CONNECTION AT 16" AFF FOR SERVICE AT ITEM 27, CONVENIENCE OUTLET
E31	120-V 1 PH SERVICE, 16.6 AMPS, 2000W. ELECTRICAL CONNECTION AT 16" AFF FOR SERVICE AT ITEM 30, WARMING/PROOFING CABINET. NEMA 5-20P RUN TO D/O MOUNTED ON ITEM 27
E33	120-V 1 PH SERVICE, 8.2 AMPS, 1/2 HP. ELECTRICAL OUTLET AT 36" AFF FOR SERVICE AT ITEM 33, BENCH MIXER
E41	208/240-V 1 PH SERVICE, 37.7 AMPS, 7.5 KW, 3/4 HP. ELECTRICAL CONNECTION AT 16" AFF FOR SERVICE AT ITEM 41, DISHWASHER
E45	208/240-V 3 PH SERVICE, 22.1 AMPS, 8250W. ELECTRICAL CONNECTION AT 16" AFF FOR SERVICE AT ITEM 45, HOT FOOD UNIT
E49	120-V 1 PH SERVICE, 10.9 AMPS, 1/2 HP. ELECTRICAL CONNECTION AT 78" AFF FOR SERVICE AT ITEM 49, 3 SECTION REFRIGERATOR
E55	120-V 1 PH SERVICE, 19.3 AMPS, 1/2 HP. ELECTRICAL CONNECTION AT 46" AFF FOR SERVICE AT ITEM 55, ICE MAKER/DISPENSER
E56	120-V 1 PH SERVICE, 13.9 AMPS, 1670W. ELECTRICAL OUTLET AT 46" AFF FOR SERVICE AT ITEM 56, COFFEE BREWER
E60	120-V 1 PH SERVICE, 6.1 AMPS, 1/5 HP. ELECTRICAL OUTLET AT 46" AFF FOR SERVICE AT ITEM 60, BEVERAGE DISPENSER
E64	120-V 1 PH SERVICE, 14 AMPS, 1.6KW. ELECTRICAL OUTLET AT 46" AFF FOR SERVICE AT ITEM 64, MICROWAVE OVEN
E66	120-V 1 PH SERVICE, 10 AMPS. ELECTRICAL OUTLET AT 16" AFF FOR SERVICE AT ITEM 66, SALAD BAR UNIT
E67	120-V 1 PH SERVICE, 9 AMPS, 1/4 HP. ELECTRICAL OUTLET AT 60" AFF FOR SERVICE AT ITEM 67, REFRIGERATED DISPLAY CASE
E71	208/240-V 1 PH SERVICE, 9.2 AMPS, 2.2 KW. ELECTRICAL OUTLET AT 46" AFF FOR SERVICE AT ITEM 71, TOASTER
E74	120-V 1 PH SERVICE, 10.7 AMPS. ELECTRICAL CONNECTION AT 78" AFF FOR SERVICE AT ITEM 74, DUAL TEMP REF/FREEZER



SYMBOLS	
	DUPLEX
	SIMPLEX
	JUNC. BOX
	ELEC. STUB
	FL RECPT

  
 Design Group, Inc.  
 Jacksonville, Florida  
 904-543-7670  
 www.jaxdesigngroup.com

Project Title

TYPICAL WORKBOAT CLASS "A"  
GALLEY AND MESS DESIGN

Revisions

Date: 03-20-2013

Drawn By:  
**JOHN ZEREBNY**  
FCSI #705968

ELECTRICAL  
ROUGH-INS

Sheet Number

FSE-1

JAX Design Group, Inc.  
 Marine Galley  
 Consulting and Design  
 3948 South 3rd Street, #305  
 Jacksonville Beach, FL, 32250  
 904-543-7670/ Fax 543-1246  
 E-MAIL: jzerebny@comcast.net  
 www.jaxdesigngroup.com

THIS DRAWING & SPEC'S ARE THE PROPERTY OF JAX DESIGN DRUUP, INC. & ARE NOT TO BE USED ON ANY WORK IN PART OR IN WHOLE EXCEPT BY WRITTEN AGREEMENT THROUGH JAX DESIGN GROUP, INC.

THIS DRAWING IS AN INSTRUMENT OF SERVICE FOR OTHER CONTRACTORS. ALL DIMENSIONS TO BE VERIFIED ON THE JOB SITE, & CONTRACTORS SHOULD CHECK WITH EQUIPMENT SUPPLIER REGARDING RUGH-IN WORK. ALL DIMENSIONS ARE FROM FINISHED FLOORS AND WALLS. ALL STUBBING TO BE AT LEAST 3" AFF UNLESS OTHERWISE SPECIFIED. ACTUAL LOCATIONS OF FLOOR DRAINS, SIZES AND LOCATION OF VENTILATING EQUIPMENT & GREASE TRAPS TO BE DETERMINED BY ARCHITECT OR ENGINEER

PLUMBING & ELECTRICAL LOCATIONS AS SHOWN ON THE PLAN ARE OF OUTLETS AS THEY EXIST ON FIXTURES TO TAKE CARE OF CONNECTING UP TO FIXTURES.