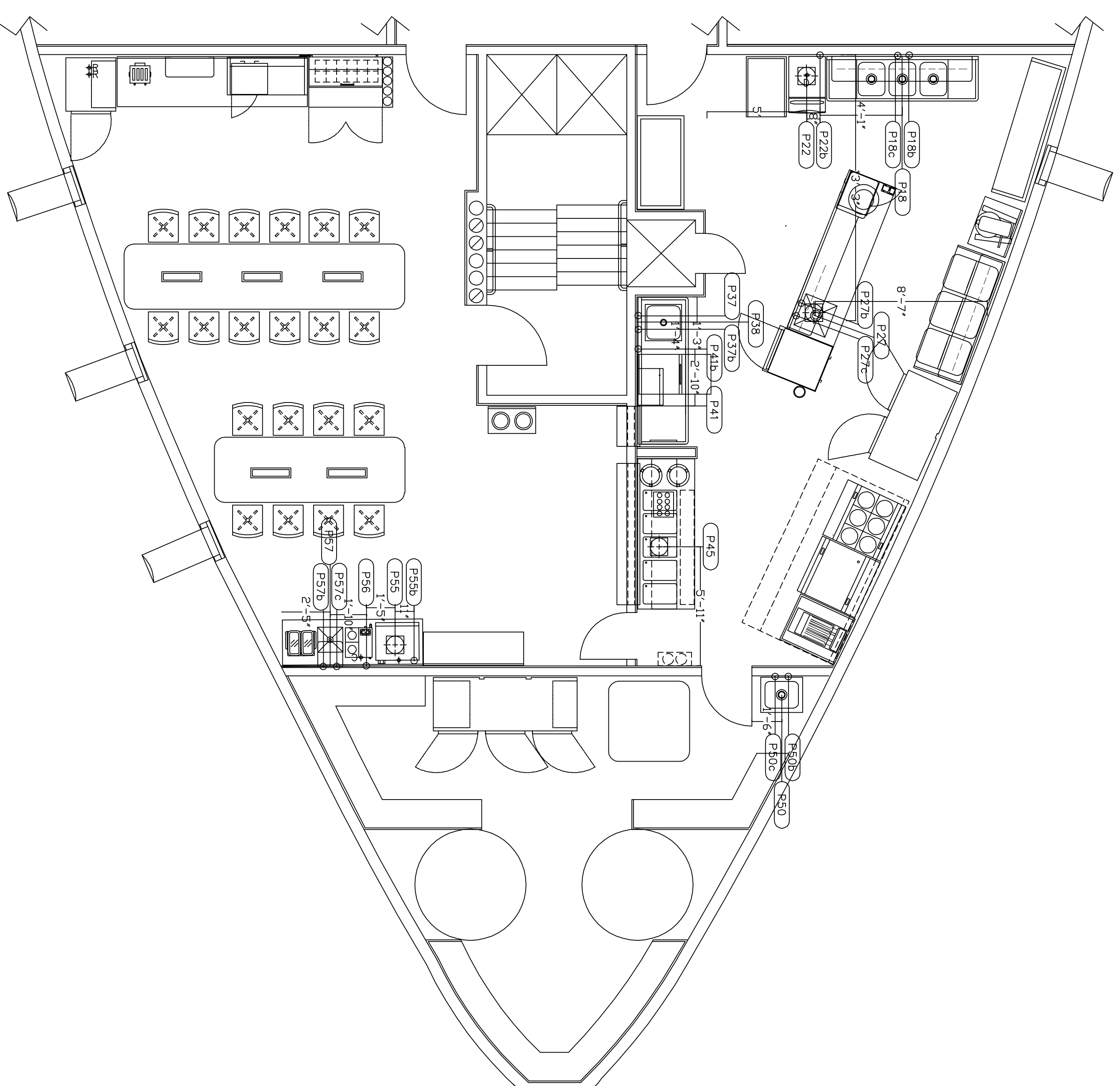
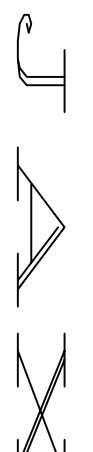


PLUMBING CONNECTION SCHEDULE

P18	1 1/2" DIRECT WASTE, STUB OUT AT 14" AND CONNECT ITEM 18, 3 COMPARTMENT SINK, 3 DRAINS, BTC
P18b	1/2" COLD WATER, STUB OUT AT 16" AFF AND CONNECT ITEM 18 THREE COMP SINK
P18c	1/2" HOT WATER, STUB OUT AT 16" AFF AND CONNECT ITEM 18, 3 COMP SINK
P22	HUB DRAIN, 1/2" INDIRECT WASTE FROM ITEM 22, ICE MACHINE
P22b	1/2" COLD WATER, STUB OUT AT 14" AFF AND CONNECT ITEM 22, ICE MACHINE. RUN SUPPLY THROUGH WATER FILTER
P27	HUB DRAIN, 1 1/2" INDIRECT WASTE FROM ITEM 27, COOK'S DRESSER W/SINK
P27b	1/2" COLD WATER, STUB OUT AT 14" AFF AND CONNECT ITEM 27, COOK'S DRESSER W/SINK
P27c	1/2" HOT WATER, STUB OUT AT 14" AFF AND CONNECT ITEM 27, COOK'S DRESSER W/SINK
P37	1/2" COLD WATER, STUB OUT AT 16" AFF AND CONNECT ITEM 37, PRE-RINSE SPRAY HOSE
P37b	1/2" HOT WATER, STUB OUT AT 16" AFF AND CONNECT ITEM 37, PRE-RINSE SPRAY HOSE
P38	1 1/2" DIRECT WASTE, STUB OUT AT 14" AFF AND CONNECT ITEM 38, SOILED DISHTABLE
P41	3/4" DIRECT WASTE, STUB OUT AT 14" AFF AND CONNECT ITEM 41, DISHWASHER
P41b	3/4" HOT WATER, STUB OUT AT 16" AFF AND CONNECT ITEM 41, DISHWASHER
P45	HUB DRAIN, 1" INDIRECT WASTE FROM ITEM 45, HOT FOOD UNIT
P50	1 1/2" DIRECT WASTE, STUB OUT AT 2" AFF AND CONNECT ITEM 50, MOP SINK
P50b	1/2" COLD WATER, STUB OUT AT 36" AFF AND CONNECT ITEM 50, MOP SINK FAUCET
P50c	1/2" HOT WATER, STUB OUT AT 36" AFF AND CONNECT ITEM 50, MOP SINK FAUCET
P55	HUB DRAIN, 3/4" INDIRECT WASTE FROM ITEM 55, ICE MAKER/DISPENSER
P55b	1/2" COLD WATER, STUB OUT AT 46" AFF AND CONNECT ITEM 55, ICE MAKER/DISPENSER
P56	1/4" COLD WATER, STUB OUT AT 46" AFF AND CONNECT ITEM 56, COFFEE MAKER
P57	1 1/2" DIRECT WASTE, STUB OUT AT 14" AFF AND CONNECT ITEM 57, BEVERAGE SERVER SINK
P57b	1/2" COLD WATER, STUB OUT AT 16" AFF AND CONNECT ITEM 57, BEVERAGE SERVER SINK
P57c	1/2" HOT WATER, STUB OUT AT 16" AFF AND CONNECT ITEM 57, BEVERAGE SERVER SINK



SYMBOLS	
	FLOOR SINK
	HUB DRAIN
	FUNNEL DRAIN
	COND. REC.
	H & C WATER
	GAS


 Design Group, Inc.
 Jacksonville, Florida
 904-543-7670
 www.jaxdesigngroup.com

THIS DRAWING & SPEC'S ARE THE PROPERTY OF JAX DESIGN DRUP, INC. & ARE NOT TO BE USED ON ANY WORK IN PART OR IN WHOLE EXCEPT BY WRITTEN AGREEMENT THROUGH JAX DESIGN GROUP, INC.

THIS DRAWING IS AN INSTRUMENT OF SERVICE FOR OTHER CONTRACTORS. ALL DIMENSIONS TO BE VERIFIED ON THE JOB SITE, & CONTRACTORS SHOULD CHECK WITH EQUIPMENT SUPPLIER REGARDING ROUGH-IN WORK. ALL DIMENSIONS ARE FROM FINISHED FLOORS AND WALLS. ALL STUBBING TO BE AT LEAST 3' AFF UNLESS OTHERWISE SPECIFIED. ACTUAL LOCATIONS OF FLOOR DRAINS, SIZES AND LOCATION OF VENTILATING EQUIPMENT & GREASE TRAPS TO BE DETERMINED BY ARCHITECT OR ENGINEER.

PLUMBING & ELECTRICAL LOCATIONS AS SHOWN ON THE PLAN ARE OF OUTLETS AS THEY EXIST ON FIXTURES TO TAKE CARE OF CONNECTING UP TO FIXTURES.

JAX Design Group, Inc.
 Marine Galley
 Consulting and Design
 3948 South 3rd Street, #305
 Jacksonville Beach, Fl, 32250
 904-543-7670/ Fax 543-1246
 E-MAIL: jzerebny@comcast.net
 www.jaxdesigngroup.com

Project Title
 TYPICAL WORKBOAT CLASS "A"
 GALLEY AND MESS DESIGN

Revisions

Date: 03-20-2013
 Drawn By:
 JOHN ZEREBNY
 PCSI #705968
 Scale: 1/4" = 1'0"

PLUMBING
 ROUGH-INS
 Sheet Number
 FSP-1